

Micro Rivets

2 mm aluminum open end rivet designed for small micro-electronic applications.



Key features and benefits

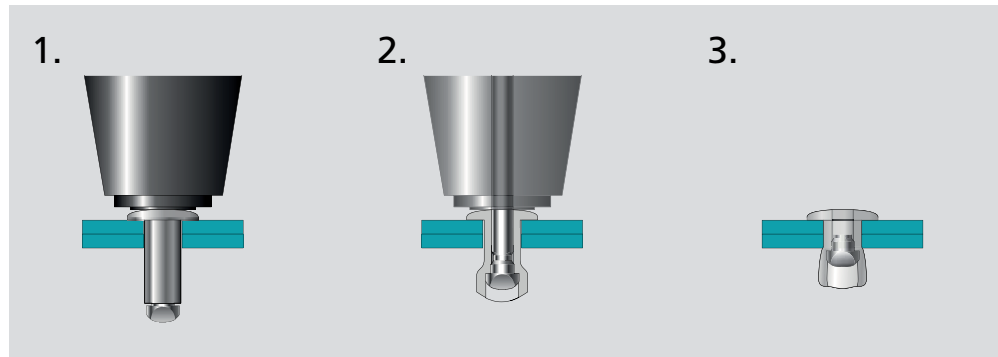
- Smallest blind rivet available
- Suitable for tight places
- Accommodates very small holes
- Requires access to primary side only
- Very low secondary side clearance
- Low head height
- Soft set body will not damage work piece
- Ideal for thin metal and printed circuit boards



Specifications

Size:
.078" (2.0 mm)
Material:
Aluminum
Head Style:
Dome

Typical placing sequence



Please visit our website for fastener placing animations and technical data.

Assembly applications

- Electronic devices
- Telecommunications
- Vehicle electronics
- Entertainment systems

Electronics applications



Computer and mobile devices



Car entertainment



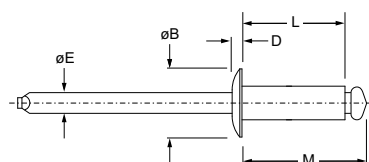
Automotive electronics





English	Français	Deutsch	Italiano	Español
Dome head	Tête plate	Flachrundkopf	Testa Tonda	Cabeza alomada
Body: Aluminum* Natural	Corps: Aluminium* Brut	Hülse: Aluminium* Unbehandelt	Corpo: Alluminio* Nessuna finitura	Cuerpo: Aluminio* Natural
Stem: Steel Zinc plated	Tige: Acier Revêtement zingué	Dorn: Stahl Verzinkt	Gambo: Acciaio Zincato	Vástago: Acero Zincado

*: 5154



Ø					L	M	ØE	ØB	D			Part No.
nom.	min.	max.	min.	max.	ref.	ref.	ref.	max.	max.	lbf (kN) ¹⁾	lbf (kN) ¹⁾	
.078 (2.0)	.0	.063 (1.6)	.080 (2.03)	.084 (2.13)	.161 (4.1)	.295 (7.5)	.043 (1.1)	.156 (4.0)	.029 (0.8)	66 (0.30)	87 (0.39)	TAPD 20M1 BS
	.039 (1.0)	.126 (3.2)			.224 (5.7)	.358 (9.1)						TAPD 20M2 BS
	.126 (3.2)	.189 (4.8)			.291 (7.4)	.425 (10.8)						TAPD 20M3 BS
	.189 (4.8)	.252 (6.4)			.354 (9.0)	.488 (12.4)						TAPD 20M4 BS
	.252 (6.4)	.315 (8.0)			.421 (10.7)	.555 (14.1)						TAPD 20M5 BS

dimensions in inches and (mm) / en pouces et (millimètre) / alle Maße in Zoll und (mm) / in pollici e (millimetri) / en pulgadas y (milímetros)

1) typical values / valeurs moyennes / typische Werte / Valori tipici / valores típicos